

4

190 x 245 mm
296 Pages
Paperback

31 Houses
27 Plans
8 CGAs

SMALL
MEDIUM
HOUSES





MATERIOR HOME OFFICE
by Materior Studio

The home office of Materior Studio is located in suburban Chiang Mai. This linear two-storey building is divided into two symmetrical parts—a working space on the north side of the ground floor that contains a shoe-making area and an architect's office on the south side with two bedrooms located on the upper floor.

The multi-functional covered outdoor terrace at the heart of the building connects to the surrounding spaces and also provides ventilation and natural light. The wooden lower facade positioned over the central terrace filters direct sunlight, protects from the rain, blocks noise, and ensures privacy on the upper level.

To increase affordability, the architect reuses old wooden windows and doors, which retain a more traditional appearance, but he also complements them with more durable modern materials such as aluminium doors in areas of the house that require daily use.

Location: Dae Saket,
Chiang Mai, Thailand
Completion: 2019
Area: 150 sq.m.

Client: Suneth Kulkarni,
Wanisa Kulkarni

Architect: Suneth Kulkarni,
Pengaporn Nui Pradit,
Pisa Pungjai

Structural Engineer: Somphat Pimrakul
Photographer: Willem Buijs and Peter Krogendal





MATERIOR HOME OFFICE

by Materior Studio

Location: Doi Saket,
Chiang Mai, Thailand
Completion: 2019
Area: 150 sq.m.

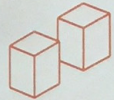
Owner: Suneth Klahan
Wanya Klahan
Architect: Suneth Klahan
Pongsakorn No Patangul
Pitit Pongsakul
Structural Engineer: Sornphet Pongsakul
Photography: Pitita Klahan and Pitit Pongsakul

The home office of Materior Studio is located in suburban Chiang Mai. This linear two-story building is divided into two symmetrical parts—a working space on the north side of the ground floor that contains a show-making area and an architect's office on the south side with two bedrooms located on the upper floor.

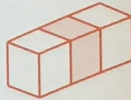
The multi-functional covered outdoor terrace at the heart of the building connects to the surrounding spaces and also provides ventilation and natural light. The wooden louver facade positioned over the central terrace filters direct sunlight, protects from the rain, blocks noise, and ensures privacy on the upper level.

To increase affordability, the architect reuses old wooden windows and doors, which retain a more traditional appearance, but he also complements them with more durable modern materials such as aluminum doors in areas of the house that require daily use.

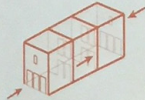




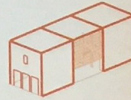
Two blocks of indoor space for working and living



Connected by a semi-outdoor kitchen and terrace



Doors and windows facing the same direction for ventilation to flow through



Wooden louver is added to provide natural light into the middle of the building



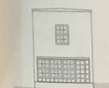
Operative wooden windows maintain a traditional appearance while also offering comfort and functionality



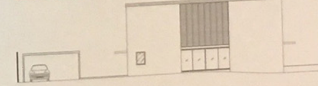
SOUTH ELEVATION



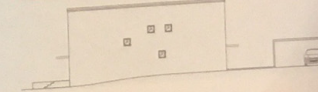
NORTH ELEVATION



EAST ELEVATION



WEST ELEVATION



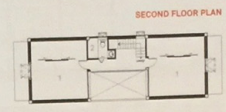


SECOND FLOOR PLAN

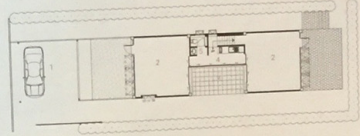
- 1. Bedroom
- 2. Bathroom

GROUND FLOOR PLAN

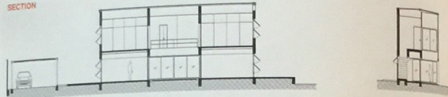
- 1. Carport
- 2. Office
- 3. Courtyard
- 4. Kitchen
- 5. Toilet



GROUND FLOOR PLAN



SECTION



The louvers inside help to shield the outdoor terrace from the mid-day sun.

